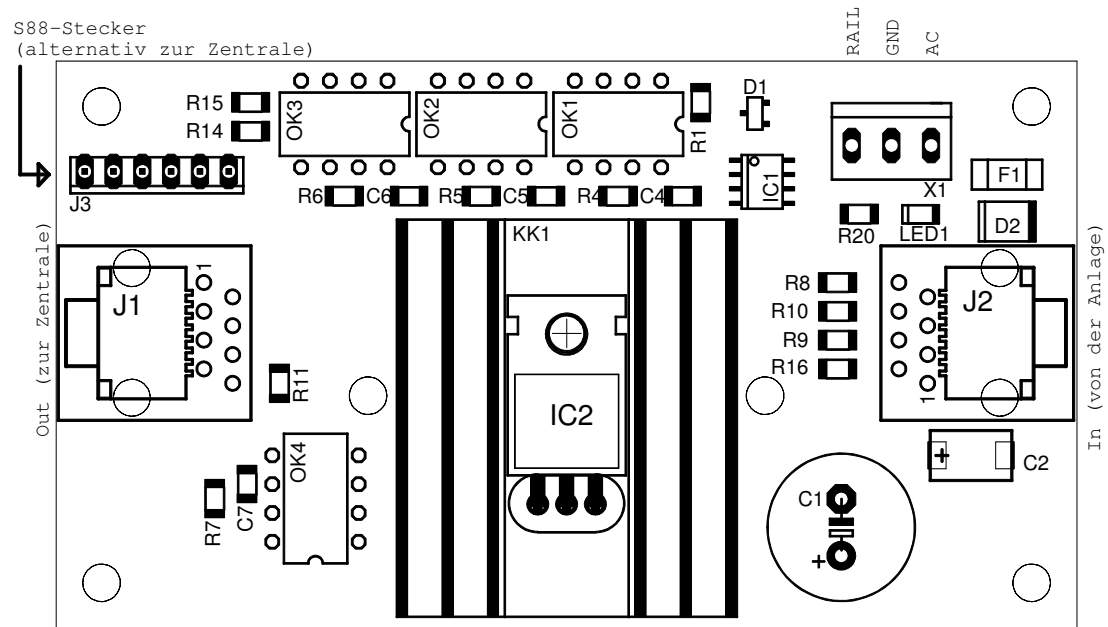
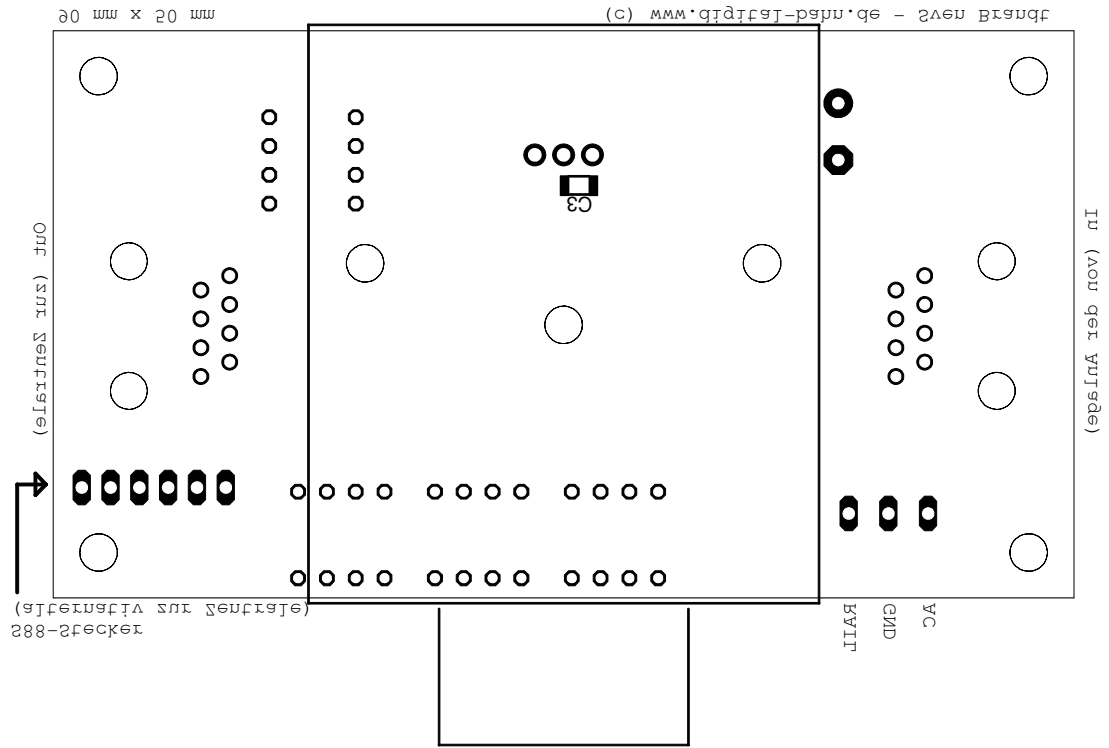


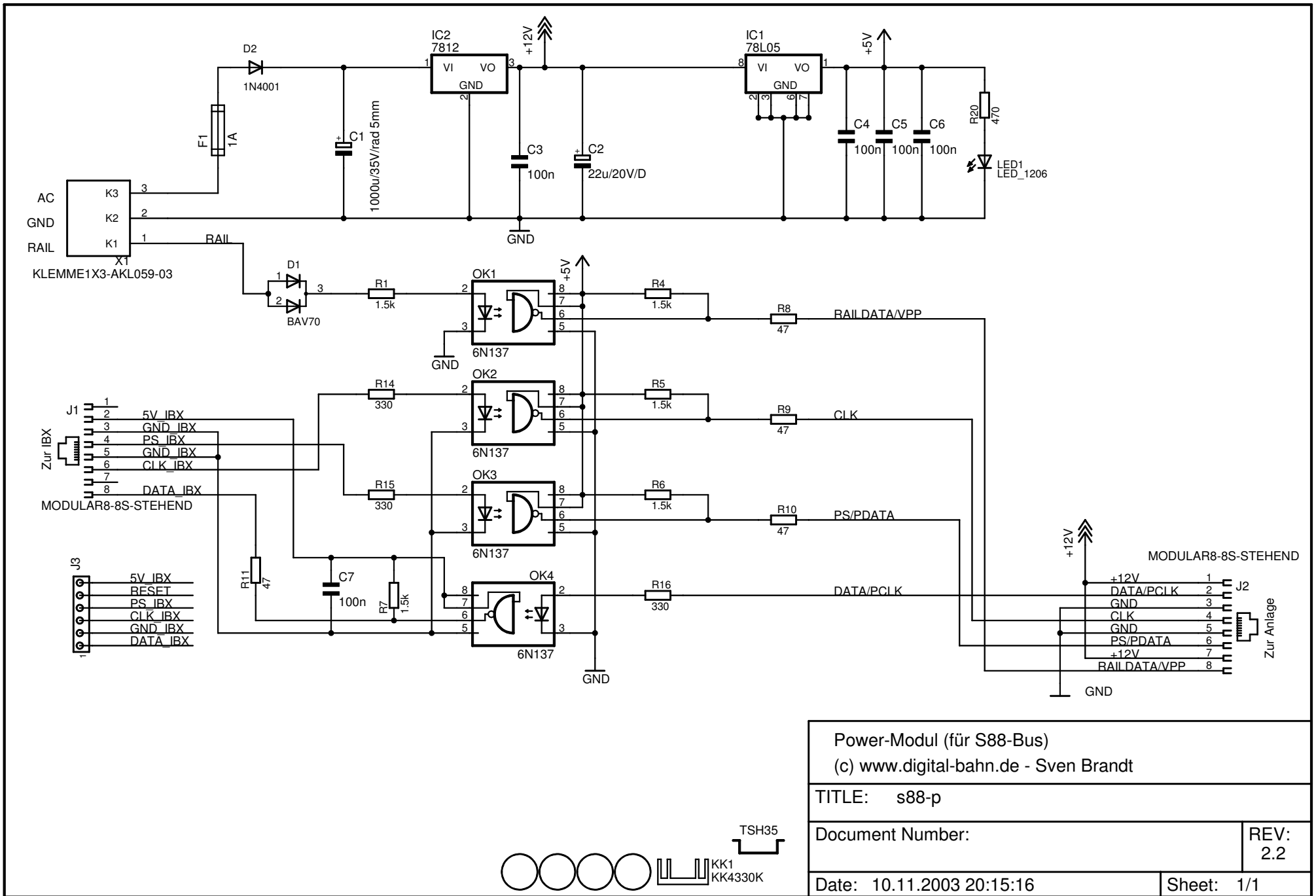
S88-Stecker
(alternativ zur Zentrale)



90 mm x 50 mm

(c) www.digital-bahn.de - Sven Brandt





Power-Modul (für S88-Bus)
(c) www.digital-bahn.de - Sven Brandt

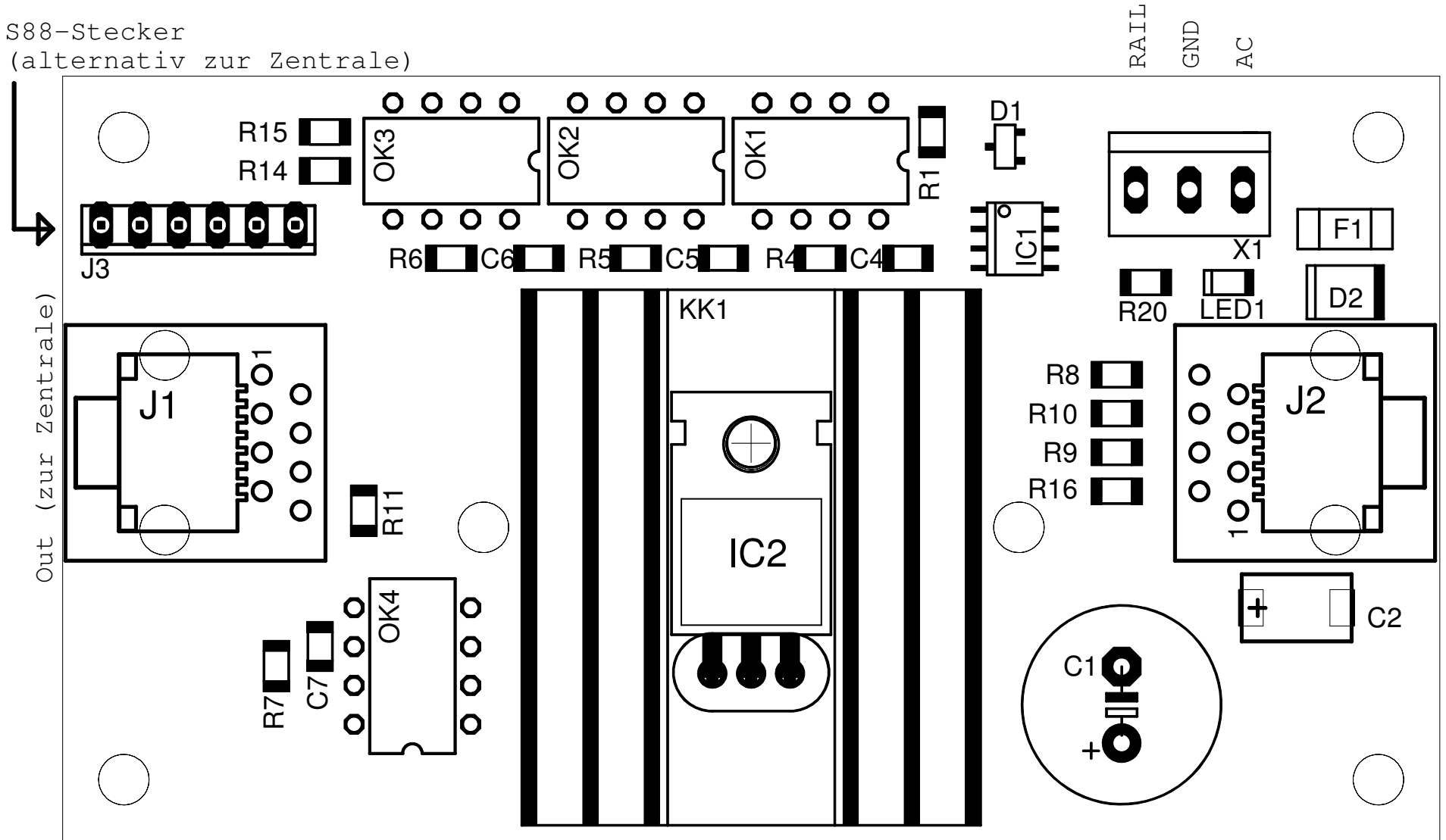
TITLE: s88-p

Document Number: _____ REV: 2.2

Date: 10.11.2003 20:15:16 Sheet: 1/1



S88-Stecker
(alternativ zur Zentrale)



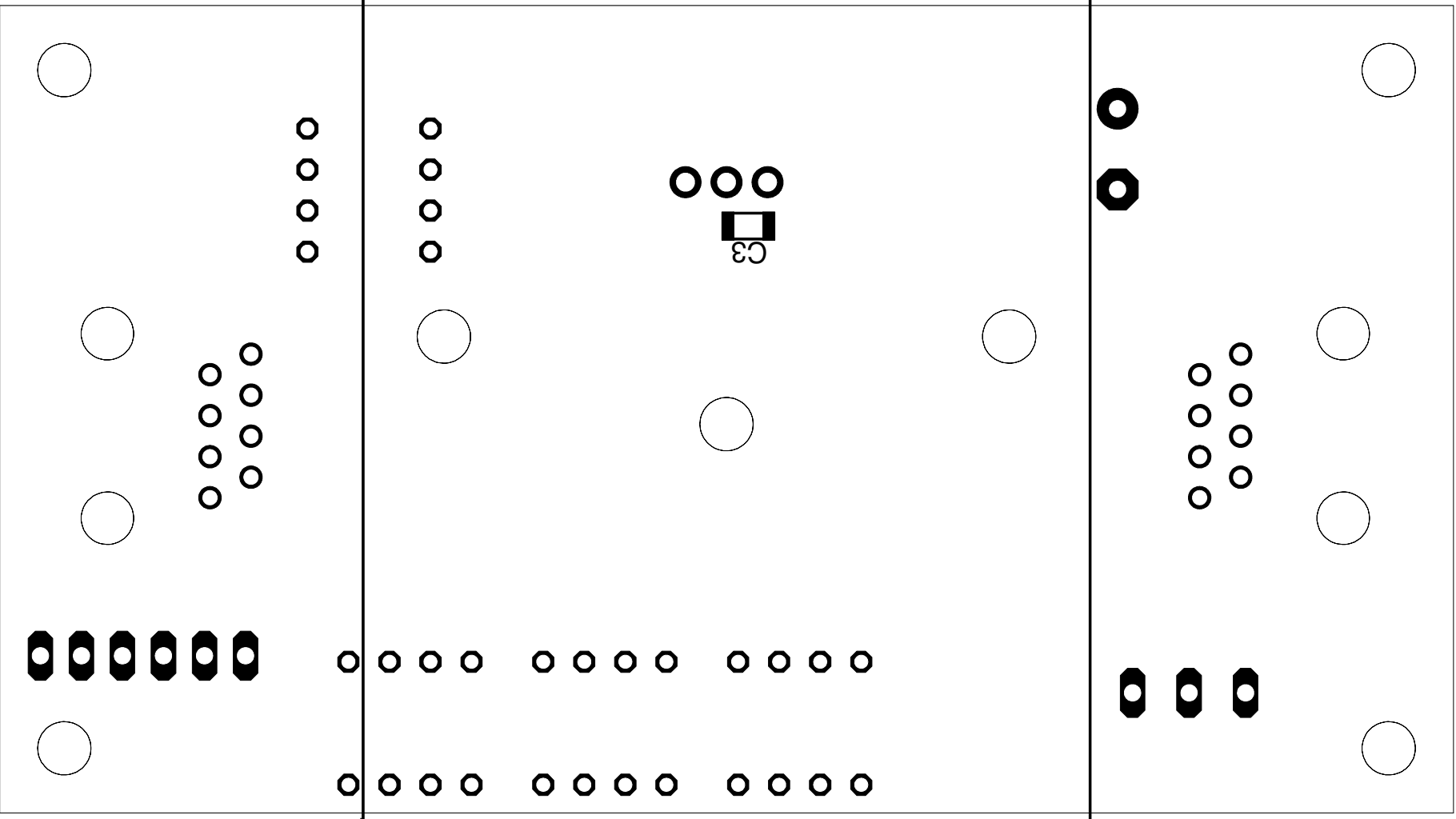
90 mm x 50 mm

(c) www.digital-bahn.de - Sven Brandt

288-Stecker
(alternativ zur Zentrale)



(e)lserneZ zur Zentrale



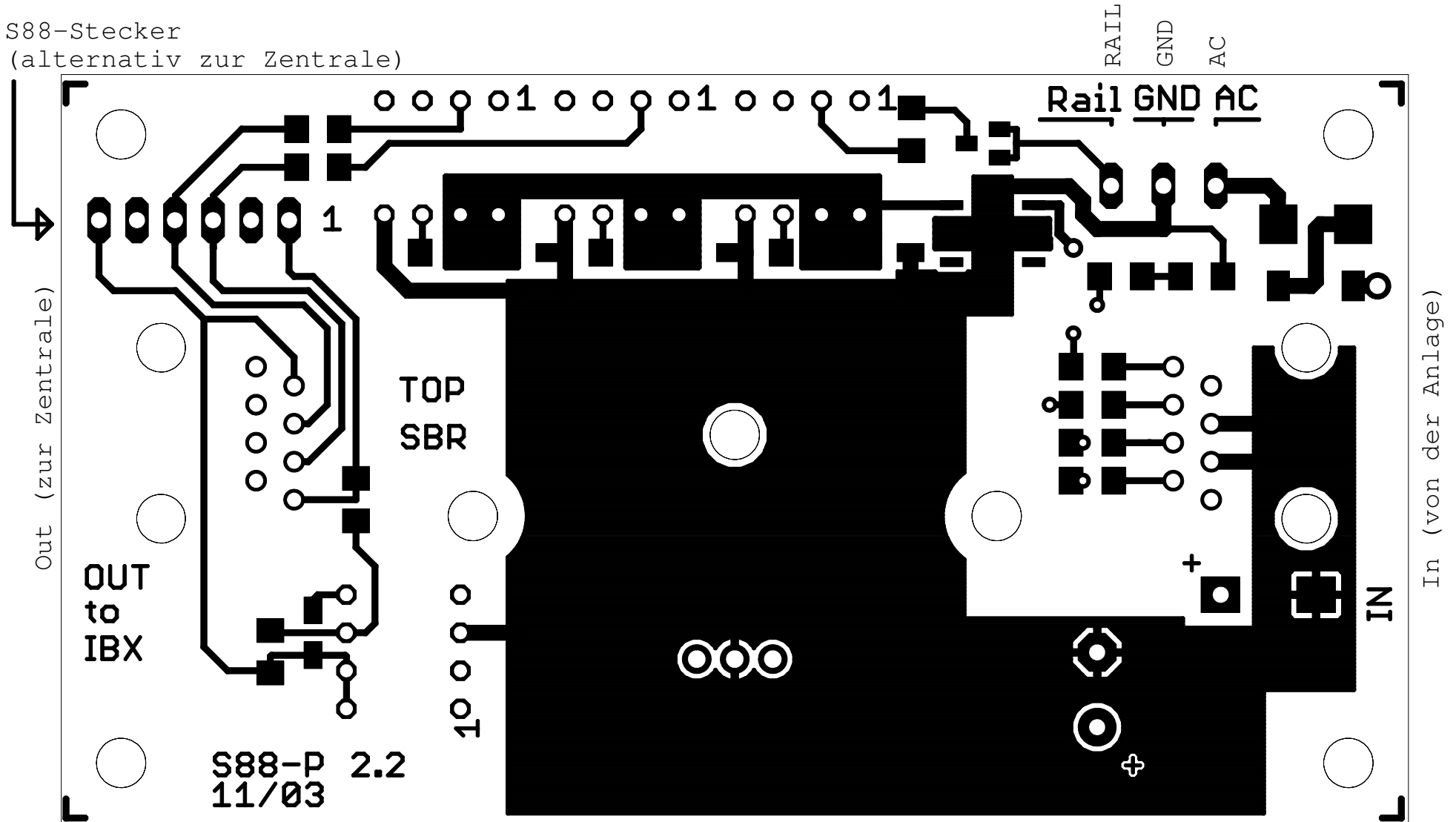
20 mm x 20 mm

(c) MWM.qTqTf9J-p9pu.qe - Zven Brangf

BATT
GND
AC

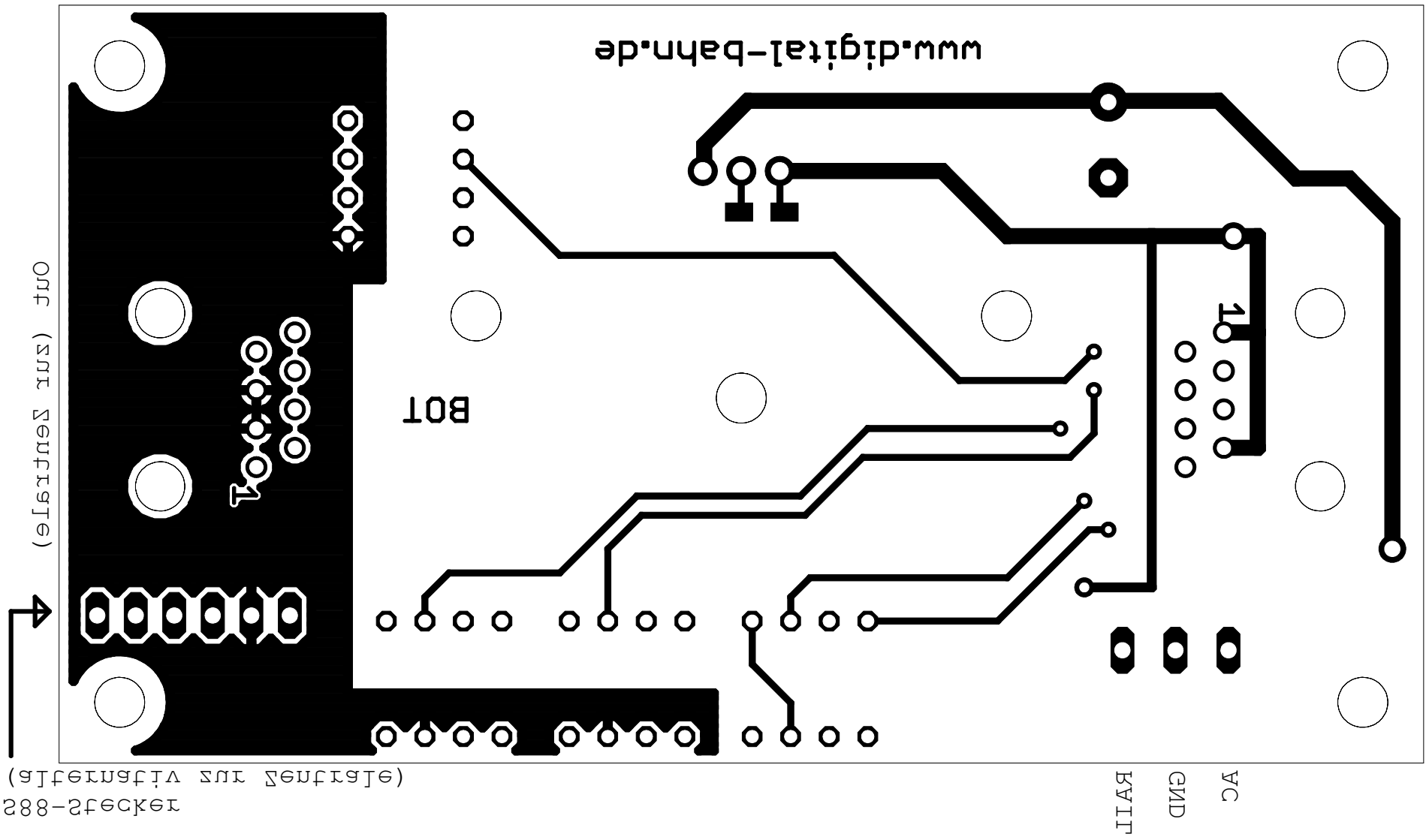
In (von der Seite)

S88-Stecker
(alternativ zur Zentrale)



90 mm x 50 mm

(c) www.digital-bahn.de - Sven Brandt



288-Stecker (alternativ zur Zentrale)

Auf (zur Zentrale)

In (von der Zentrale)

VCC
GND
RV117

BOT

www.digital-bahn.de